



CRTV / SCTY

Collectively
Created

Individually
Expressed

Reg. No.
3-528-874

EST. 2007



Summer 2020







THE CREATIVE SOCIETY

**The Creative Society is a community
that influences generations by
sharing the expressive talents of athletes
artists, musicians, designers
and photographers.**

**Our ability to consistently evolve enables
us to venture beyond the boundaries
of traditional design.**

**We strive to broaden the view of fashion
by integrating the personality of our
creative culture, endlessly pursuing
what we believe;
Collectively Created
Individually Expressed.**

@lirawomens

www.liraclothing.com



**LIRA MFG.
COMPANY
REG. NO. 3-528-874**

**COLLECTIVELY CREATED
INDIVIDUALLY EXPRESSED
CRTV // SCTY**

DELIVERY //





APRIL 1 // 2020

One



**JC3907 TIED UP BODYSUIT**

THONG FIT BODYSUIT WITH FRONT TIE AND ADJUSTABLE STRAPS

BLACK | RED

XS - L | 80% MODAL 20% POLYESTER

USA: w/s \$19 msrp \$38 CAN: w/s \$22.50 msrp \$45

**JC3910 BROOKS ROMPER**

SHORT ROMPER WITH ADJUSTABLE KNOTTED SHOULDER STRAPS AND SIDE POCKETS

AMBER | NAVY

XS - L | 75% POLYESTER 25% VISCOSE

USA: w/s \$21 msrp \$52 CAN: w/s \$25 msrp \$62

**JC3906 LAYNE SKIRT**

HIGH WAISTED ACID WASH MINI SKIRT WITH EXPOSED FRONT BUTTON AND RAW EDGE DETAIL

BLUE ACID

XS - L | 100% COTTON

USA: w/s \$24 msrp \$48 CAN: w/s \$30 msrp \$60

**JC3903 BENTLEY ROMPER**

SHORT ROMPER WITH HIDDEN SIDE ZIPPER AND FRONT TIE DETAIL

BLACK | IVORY

XS - L | 100% RAYON

USA: w/s \$26 msrp \$52 CAN: w/s \$32.50 msrp \$65



JC3908 ANNA TOP

CAP SLEEVE CROP TOP WITH FRONT TIE AND HIDDEN BACK ZIPPER

BLACK | BLUE

XS - L | 100% COTTON

USA: w/s \$21 msrp \$42

CAN: w/s \$25 msrp \$50



JC3902 ADELYN TOP

SHEER TONAL STRIPE TOP WITH FRONT TIE ELASTIC WAIST AND ELASTIC CAP SLEEVE

BLACK | IVORY

XS - L | 100% VISCOSE

USA: w/s \$19 msrp \$38

CAN: w/s \$22.50 msrp \$45



JC3911 HOLDEN PANT

HIGH WAISTED CROPPED PANT WITH POCKETS AND HIDDEN SIDE ZIPPER; INSEAM: 23"

BLACK | BLUE

XS - L | 100% COTTON

USA: w/s \$26 msrp \$52

CAN: w/s \$32.50 msrp \$65



JC3904 FINLEY DRESS

MINI WRAP DRESS WITH ADJUSTABLE STRAPS

NAVY

XS - L | 100% POLYESTER

USA: w/s \$21 msrp \$52.50

CAN: w/s \$25 msrp \$62







JC3912 FRESH SQUEEZED CROPPED TEE

BOXY FIT CREW NECK CROP TOP

IVORY | AMBER

XS - L | 100% COTTON

USA: w/s \$14 msrp \$28

CAN: w/s \$16 msrp \$32



JC3900 HADLEY DRESS

MAXI SHORT SLEEVE WRAP DRESS

AMBER | NAVY

XS - L | 75% POLYESTER 25% VISCOSE

USA: w/s \$24 msrp \$60

CAN: w/s \$30 msrp \$75



JC3909 HAYES SHORT

HIGH WAISTED ACID WASH SHORT WITH ELASTIC WAIST; INSEAM: 2.75" RISE: 14"

BLUE ACID

25 - 31 | 100% COTTON

USA: w/s \$26 msrp \$52

CAN: w/s \$32.50 msrp \$65



JC3905 LEIGHTON ROMPER

SHORT SLEEVE SHORT ROMPER WITH HIDDEN FRONT SNAP BUTTON

NAVY

XS - L | 100% POLYESTER

USA: w/s \$21 msrp \$52

CAN: w/s \$25 msrp \$62



JC3901 BRITTON DRESS

CAP SLEEVE MINI DRESS WITH BACK ZIPPER AND FRONT V WIRE DETAIL

BLACK

XS - L | 75% COTTON 23% POLYESTER 2% ELASTANE

USA: w/s \$30 msrp \$60

CAN: w/s \$37.50 msrp \$75



JC3111 JESSA PLAYSUIT

SCOOP NECK CROPPED PLAYSUIT WITH SIDE POCKETS AND ADJUSTABLE STRAPS

LEMON | BLUE | BLACK

XS - L | 80% MODAL 20% POLYESTER

USA: w/s \$30 msrp \$60

CAN: w/s \$35 msrp \$70





DELIVERY //





MAY 1 // 2020

wa





JC3923 SERANO TOP

CROPPED CAP SLEEVE TOP WITH BACK TIE

RED | IVORY

XS - L | 96% POLYESTER 4 % SPANDEX

USA: w/s \$18 msrp \$36 CAN: w/s \$20 msrp \$40



JC3926 SUNS OUT TANK

CROPPED CREW NECK MUSCLE TANK

IVORY | AMBER

XS - L | 100% COTTON

USA: w/s \$14 msrp \$28 CAN: w/s \$16 msrp \$32



JC3925 KELLI SKIRT

MIDI LENGTH SKIRT WITH ELASTIC WAISTBAND AND SIDE TIE

RED | BLUE

XS - L | 100% VISCOSE

USA: w/s \$18 msrp \$45 CAN: w/s \$20 msrp \$45



JC3922 RIDGEMONT SHORT

LIGHTWEIGHT SHORT WITH ADJUSTABLE DRAWSTRING WAIST

BLACK | BLUE

XS - L | 100% COTTON

USA: w/s \$20 msrp \$40 CAN: w/s \$22.50 msrp \$45

**JC3917 DAISY CHAIN DRESS**

SHORT SLEEVED MINI WRAP DRESS WITH HIDDEN SIDE SNAP BUTTON

RED | BLUE

XS - L | 100% VISCOSE

USA: w/s \$20 msrp \$50**CAN:** w/s \$22.50 msrp \$56**JC3945 DRINKING TEAM TEE**

OVERSIZED CREW NECK TEE

BLACK | IVORY

XS - L | 100% COTTON

USA: w/s \$14 msrp \$28**CAN:** w/s \$16 msrp \$32**JC3920 LILI PLAYSUIT**

CROPPED MUSCLE SLEEVE JUMPSUIT WITH ELASTIC WAIST AND SIDE CUT OUT

BLACK | BLUE

XS - L | 100% COTTON

USA: w/s \$29 msrp \$58**CAN:** w/s \$35 msrp \$70**JC3606 OLIVER SKIRT**

STRETCH MINI SKIRT WITH BACK ZIPPER

RED

XS - L | 98% COTTON 2% ELASTANE

USA: w/s \$24 msrp \$48**CAN:** w/s \$30 msrp \$60







JC3919 LOUISE ROMPER

CAMI STRAP SHORT ROMPER WITH ELASTIC WAIST AND BUTTON BODICE

RED | BLUE

XS - L | 100% VISCOSE

USA: w/s \$20 msrp \$50

CAN: w/s \$22.50 msrp \$56



JC3924 TAY TOP

FLOWY TANK WITH SELF TIE STRAP

RED | BROWN

XS - L | 80% VISCOSE 15% POLYESTER 5% SPANDEX

USA: w/s \$19 msrp \$38

CAN: w/s \$22.50 msrp \$45



JC3916 WESTON DRESS

SMOCKED BODICE TANK DRESS WITH FLARE HEM

BLACK | BLUE

XS - L | 100% COTTON

USA: w/s \$25 msrp \$50

CAN: w/s \$30 msrp \$60



JC3921 THELMA TOP

DEEP V NECK FRONT TIE LONG SLEEVE TOP WITH HIDDEN HOOK AND EYE FRONT CLOSURE

RED | BLUE

XS - L | 100% VISCOSE

USA: w/s \$17 msrp \$42

CAN: w/s \$20 msrp \$50



JC3918 EVAN ROMPER

ADJUSTABLE BUTTON SHOULDER STRAP SHORT ROMPER WITH CHEST BIB POCKET FRONT AND SIDE POCKET

NAVY | IVORY

XS - L | 100% COTTON CANVAS

USA: w/s \$26 msrp \$52

CAN: w/s \$32.50 msrp \$65



JC3915 MICAH DRESS

SELF TIE TANK MAXI DRESS WITH SIDE SLIT

BLACK | LEMON

XS - L | 80% MODAL 20% POLYESTER

USA: w/s \$30 msrp \$60

CAN: w/s \$37.50 msrp \$75







JC3402 YASMINE COVERUP

MAXI LONGLINE SILHOUETTE KIMONO WITH SIDE SLIT

RED | IVORY STRIPE
OSFA | 100% VISCOSE

USA: w/s \$29 msrp \$58

CAN: w/s \$35 msrp \$70



JC3943 OUT WEST BUTTON UP

SHORT SLEEVE OVERSIZED BUTTON UP WITH CHEST PATCH POCKET

IVORY STRIPE
XS/S - M/L | 100% VISCOSE

USA: w/s \$24 msrp \$48

CAN: w/s \$30 msrp \$60



DELIVERY //





JUNE 1 // 2020

Three

MAI TAI MAMA
MAI TAI MAMA
MAI TAI MAMA
MAI TAI MAMA



JC3913 MAI TAI MAMA TANK

FITTED CROPPED SCOOP NECK TANK

BLACK | IVORY
XS - L | 100% COTTON

USA: w/s \$14 msrp \$28 CAN: w/s \$16 msrp \$32



JC3935 AISLEE TOP

CAMI ADJUSTABLE STRAP CROP TOP WITH BACK TIE

IVORY STRIPE
XS - L | 100% VISCOSE

USA: w/s \$16 msrp \$40 CAN: w/s \$15 msrp \$37



JC3934 DOVEN SHORT

PULL ON CORD SHORT WITH ELASTIC WAIST SIDE POCKET AND BACK POCKET; INSEAM: 2" RISE: 12"

BLUE | RED
XS - L | 95% COTTON 5% SPANDEX

USA: w/s \$22 msrp \$44 CAN: w/s \$25 msrp \$50



JC3940 MAY SKIRT

HIGH WAISTED MINI SKIRT WITH RUFFLE HEM AND HIDDEN SIDE ZIPPER

IVORY STRIPE
XS - L | 100% VISCOSE

USA: w/s \$18 msrp \$45 CAN: w/s \$20 msrp \$50

**JC3930 DINA DRESS**

CAMI ADJUSTABLE STRAP DRESS WITH RUFFLE TOP AND HEM DETAIL FRONT FAUX BUTTON AND BACK ZIPPER

BLUE

XS - L | 100% TENCEL

USA: w/s \$26 msrp \$52

CAN: w/s \$32.50 msrp \$65

**JC3939 MIAH PLAYSUIT**

HALTER TIE TOP JUMPSUIT WITH SMOCKED BODICE

IVORY STRIPE

XS - L | 100% VISCOSE

USA: w/s \$25 msrp \$62

CAN: w/s \$30 msrp \$75

**JC3936 HALLE TOP**

RIBBED STRETCH CROPPED TANK WITH SCOOP NECK AND LETTUCE EDGE HEM

BLACK | IVORY

XS - L | 45% VISCOSE 50% POLYESTER 5% SPANDEX

USA: w/s \$17 msrp \$34

CAN: w/s \$20 msrp \$40

**JC3938 MARONEY ROMPER**

V NECK SHORT ROMPER WITH BUTTON FRONT AND FLUTTER SHORT SLEEVE

BLACK | RED

XS - L | 100% RAYON

USA: w/s \$26 msrp \$52

CAN: w/s \$32.50 msrp \$65





**JC3941 PACKER ROMPER**

CORD SHORT OVERALL WITH ADJUSTABLE BUTTON SHOULDER STRAPS CHEST BIB POCKET FRONT SLANT POCKET BACK PATCH POCKET SIDE BUTTON CLOSURE AND CUFFED HEM; INSEAM: 2" RISE: 10"

BLUE | RED

XS - L | 95% COTTON 5% SPANDEX

USA: w/s \$28 msrp \$56 CAN: w/s \$35 msrp \$70

**JC3942 LETA BODYSUIT**

SCOOP NECK THONG FIT RIBBED STRETCH BODYSUIT WITH SNAP BUTTON CLOSURE

BLACK | RED

XS - L | 95% VISCOSE 5% SPANDEX

USA: w/s \$19 msrp \$38 CAN: w/s \$22.50 msrp \$45

**JC3937 ADELE ROMPER**

CAMI STRAP SHORT ROMPER WITH SURPLICE NECKLINE HIDDEN SNAP BUTTON AND ELASTIC WAISTBAND WITH REMOVABLE BELT TIE

IVORY

XS - L | 100% VISCOSE

USA: w/s \$21 msrp \$52

CAN: w/s \$25 msrp \$62

**JC3845 CHARGER SHORT**

HIGH WAISTED DENIM SHORT; INSEAM: 5.5" RISE: 12.5"

BLACK | IVORY

25 - 31 | 100% COTTON

USA: w/s \$25 msrp \$50

CAN: w/s \$30 msrp \$60





JC3933 PRIMROSE DRESS

CROSS BACK ADJUSTABLE BUTTON STRAP DRESS WITH FRONT BUTTON AND KEYHOLE DETAIL

IVORY STRIPE

XS - L | 100% VISCOSE

USA: w/s \$21 msrp \$52

CAN: w/s \$25 msrp \$62



JC3932 PERRY PLAYSUIT

SCOOP NECK CROPPED PLAYSUIT WITH SIDE POCKETS AND ADJUSTABLE STRAPS

BLUE

XS - L | 100% TENCEL

USA: w/s \$30 msrp \$60

CAN: w/s \$37.50 msrp \$75



JC3931 AZALIA DRESS

ABOVE THE KNEE DRESS WITH FRONT TIE DETAIL

BLACK | LEMON

XS - L | 80% MODAL 20% POLYESTER

USA: w/s \$26 msrp \$52

CAN: w/s \$32.50 msrp \$65



NOT SO //





Basics

APRIL 1 // 2020

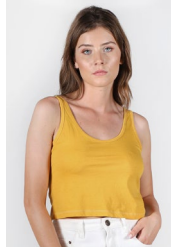


JD3652 ROCK TANK

FITTED CROPPED SCOOP NECK TANK

IVORY | BLACK | AMBER
XS - L | 100% COTTON | PIGMENT DYED

USA: w/s \$13 msrp \$26 CAN: w/s \$15 msrp \$30



JD3651 BOYFRIEND CROPPED

BOXY FIT CREW NECK CROP TOP

AMBER | IVORY | BLACK
XS - L | 100% COTTON | PIGMENT DYED

USA: w/s \$14 msrp \$28 CAN: w/s \$17.50 msrp \$35



JD3650 FITTED CREW

FITTED CREW NECK WITH FRONT POCKET

BLACK | AMBER | IVORY
XS - L | 100% COTTON | PIGMENT DYED

USA: w/s \$15 msrp \$30 CAN: w/s \$17.50 msrp \$35





JD3654 MUSCLE TANK

CROPPED CREW NECK MUSCLE TANK

BLACK | AMBER | IVORY
XS - L | 100% COTTON | MINERAL WASH

USA: w/s \$14 msrp \$28 CAN: w/s \$17.50 msrp \$35



JD3653 BOYFRIEND CREW

OVERSIZED CREW NECK TEE

AMBER | IVORY | BLACK
XS - L | 100% COTTON | MINERAL WASH

USA: w/s \$15 msrp \$30 CAN: w/s \$17.50 msrp \$35



SALES CONTACTS

LIRA CLOTHING
1169 N. KNOLLWOOD CIR.
ANAHEIM, CA 92801
O. 714-676-8624

BRIAN BARLOW
NATIONAL SALES MGR
D. 562-889-2717
barlow@liraclothing.com

AMELIA RENAUD
CALIFORNIA & NEVADA
C. 714.931.5896
amelia.n.renaud@gmail.com

EVA HUME
PACIFIC NORTHWEST
C. 303.886.7791
eva@whitefangsales.com

TYTUS FRIAR
ROCKIES
C. 303.884.0368
tytusfriar@mac.com

LAUREN BERTOLINO
NORTH EAST & TRI STATE
C. 917.226.8763
lauren@soloshowroom.com

RYAN LANGHORNE
SOUTHEAST & S. MID ATLANTIC
C. 321.795.5892
r.langhorne1@gmail.com

INTERNATIONAL

LIRA CANADA INC.
1443 RUE BEGIN,
SAINT-LAURENT QC H4R 1V8
CANADA
O. 877-507-5472

MARC A. SAUCIER
CANADIAN SALES MGR
O. 877-507-5472
marc@liraclothing.com

JON H. GENIER
QUEBEC & MARITIME
C. 450.542.0396
jonh@agencejg.com

J.S. WEIR
WESTERN CANADA
C. 778.320.9347
js@waydangerous.com

(LIRA)



COLLECTIVELY CREATED. INDIVIDUALLY EXPRESSED. USA // REGISTRATION REG. NO. 3-528-874. LIRA MFG CO.

www.liraclothing.com

@lirawomens